

**Bilba.**

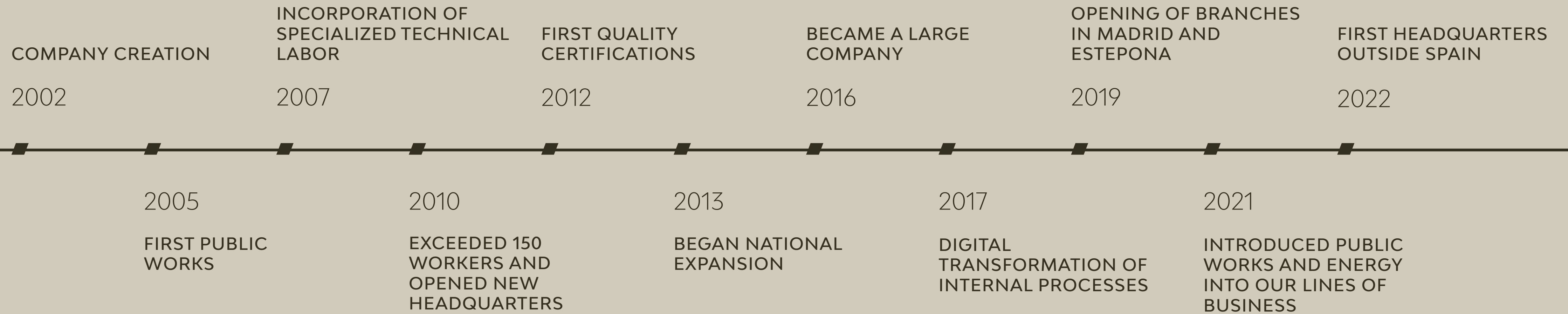
**/// /// /// BUILDING**



**PROUD OF EACH OF OUR ACHIEVEMENTS.  
EXCITED FOR EVERY CHALLENGE.**

We are a national construction company with over two decades of experience, achieving excellence by treating each project as unique.

# Bilba.





# Bilba.



## WE ALWAYS BUILD WITH...

### EFFORT

Our fundamental pillar of success and personal growth day by day..

### COMMITMENT

To our environment, people, and our projects.

### RIGOR

Through professional performance required by the complexity of our projects.

## OVER 500 EXCELLENCE PROFESSIONALS MAKE UP THE BILBA FAMILY..

### WE OPT FOR A PROFESSIONAL AND UPDATED IN-HOUSE STAFF.

Our greatest strength is translated as the collaboration between our departments and these with the rest of the stakeholders. Working as a team with clients and partners.



## OUR QUALITY AND ENVIRONMENTAL MANAGEMENT SYSTEMS ARE FOCUSED ON A PRACTICAL AND EFFECTIVE APPLICATION OF THE STANDARDS.

Our own workplace risk prevention service allows us to comply with occupational safety and health standards while supervising the well-being of the entire team.

We work daily to maintain a preventive culture that we also demand from our stakeholders.



9001:2015

Adaptation of the requirements that a quality management system must meet.



14001:2015

Defines the criteria for an environmental management system (EMS).



45001:2018

The first international standard addressing occupational safety and health.

**Bilba.**

FIGURES

**+700**

EMPLOYEES

**64.300M<sup>2</sup>**

SQUARE METERS BUILT  
IN 2022

**8**

REPRESENTATION  
OFFICES

**+300M€**

ACTIVE PORTFOLIO  
SINCE 2022







## RESIDENTIAL

Single-family  
Multi-family

## TERTIARY

Hotels  
Retail  
Offices  
Tertiary public work

## INFRASTRUCTURE

Public  
Private

## ENERGY

Self-consumption  
Photovoltaic plants





## INVOLVED FROM THE START OF THE PROJECT

Our commitment to the environment, people, and society is a constant in our work and, of course, in the way we approach it.

Our internal processes help us systematically manage the execution of works, minimizing errors and optimizing conditions from the initial phases: study, planning, and provisioning.

### STUDY

---

Technical and economic analysis.

License, authorization, and legal aspects evaluation.

Project's environmental impact analysis.

Direct and indirect cost control.

Industrialization possibilities.

Optimization analysis.

### PROGRAMMING

---

Task planning.

Resource assignment.

Execution time control. Planning of purchases and deliveries. Quality plan.

Waste management plan.

Safety plan.

### PROVISIONING

---

Quality control of materials.

Supplier approval.

Logistics.

Commitment guaranteed management.

Contractual management.



**Bilba.**

INDUSTRIALIZATION

## INDUSTRIALIZATION AS A KEY TO INNOVATION

WE IMPLEMENT LOW ENVIRONMENTAL IMPACT IN  
OUR INDUSTRIALIZED CONSTRUCTION  
PROCESSES.

We continuously explore new trends and tools to remain  
competitive in an ever-evolving market.

We understand and embrace new construction processes and  
include new management cultures more in line with current  
times.





**Bilba.**

**WE RELY ON COLLABORATIVE  
METHODOLOGY TO INCREASE THE  
FINAL VALUE OF THE PROJECT.**

WITH PROFESSIONAL COLLABORATION, WE  
MAXIMIZE EFFICIENCY IN ALL CONSTRUCTION  
PHASES.

We base ourselves on the principles of collective intelligence, transparency, and information exchange, as well as on defining a common goal and commitment from everyone. In this way, we improve productivity and ensure the delivery of a better job.

INTEGRATED PROYECT DELIVERY





**Bilba.**

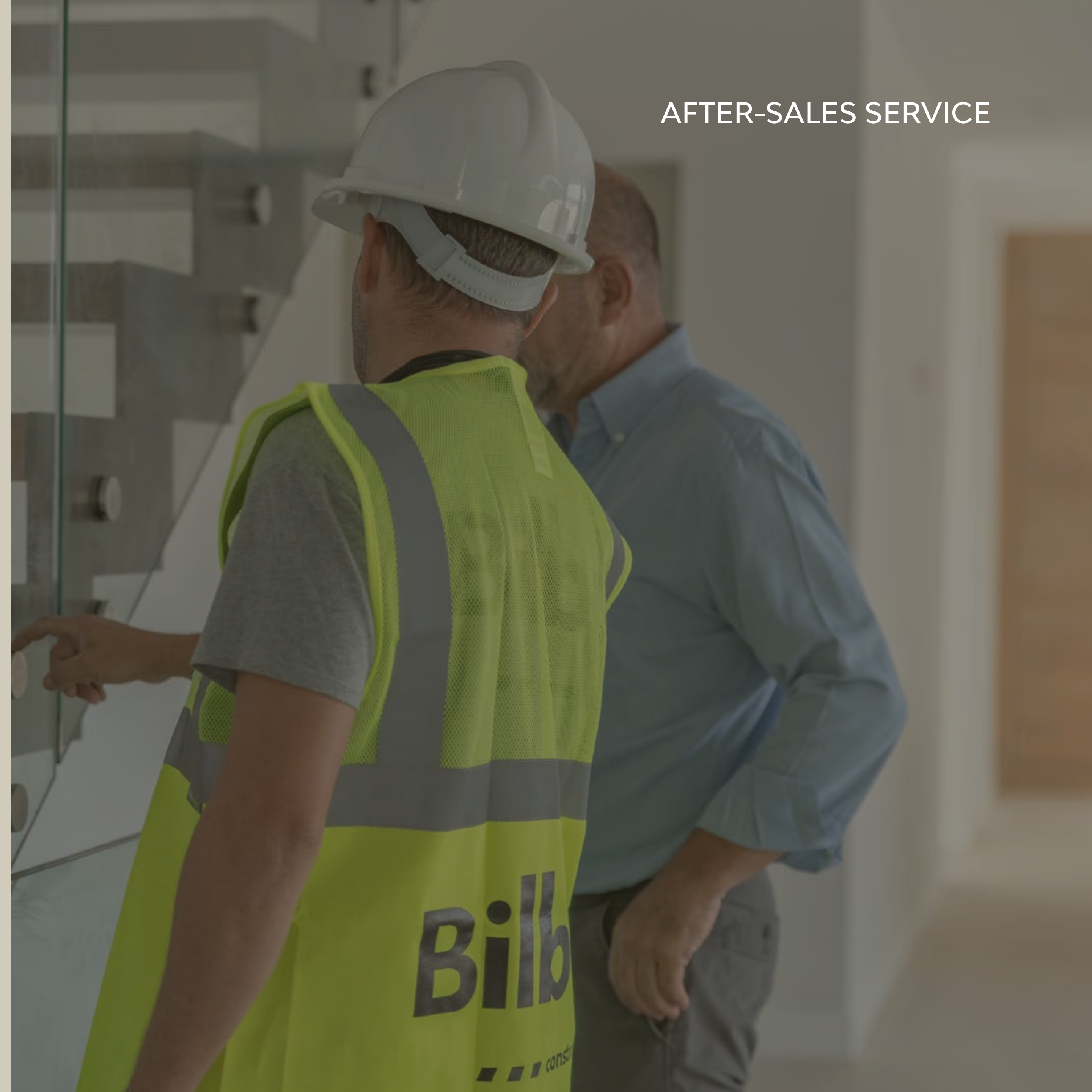
AFTER-SALES SERVICE

**WE VERIFY THE PROJECT'S  
OPERABILITY ACCORDING TO  
WHAT HAS BEEN EXECUTED.**

OUR WORK DOES NOT END AT DELIVERY. WE  
CONTINUE TO PROVIDE SERVICE UNTIL WE ARE  
CERTAIN THAT THE PROJECT HAS BEEN A SUCCESS.

In this last phase, we validate that the integration of the efforts of  
all agents involved in the work is in line with the design and  
exceeds client expectations.

Commissioning.  
Engineering support.  
Validation.





## WE HAVE DEVELOPED A BUSINESS MODEL BASED ON SUSTAINABILITY.

We proactively work both in mitigating impacts on the environment and in raising environmental awareness among all stakeholders. We make this environmental responsibility effective through pollution prevention, resource optimization, and execution time reduction.

We prioritize the minimization of consumption and waste in our works, involving our workforce and third parties. We do this using advanced management tools, the experience of our construction teams, enhanced by our technical capacity, and valuing the availability of resources necessary to guarantee the best prices and timelines in the development of our projects.

We encourage our clients to make good strategic decisions also in the environmental field and promote their transformation process by providing tools and technologies that promote sustainability in their businesses, operations, and supply chains.



# Bilba.

## BREEAM SUSTAINABILITY CERTIFICATION

We implement the BREEAM sustainability certification in most of our projects.

This certification guarantees us to reduce the environmental impact during the life of the buildings we construct.





Bilba.

# RESIDENTIAL PROJECTS





PRIVATE WORK

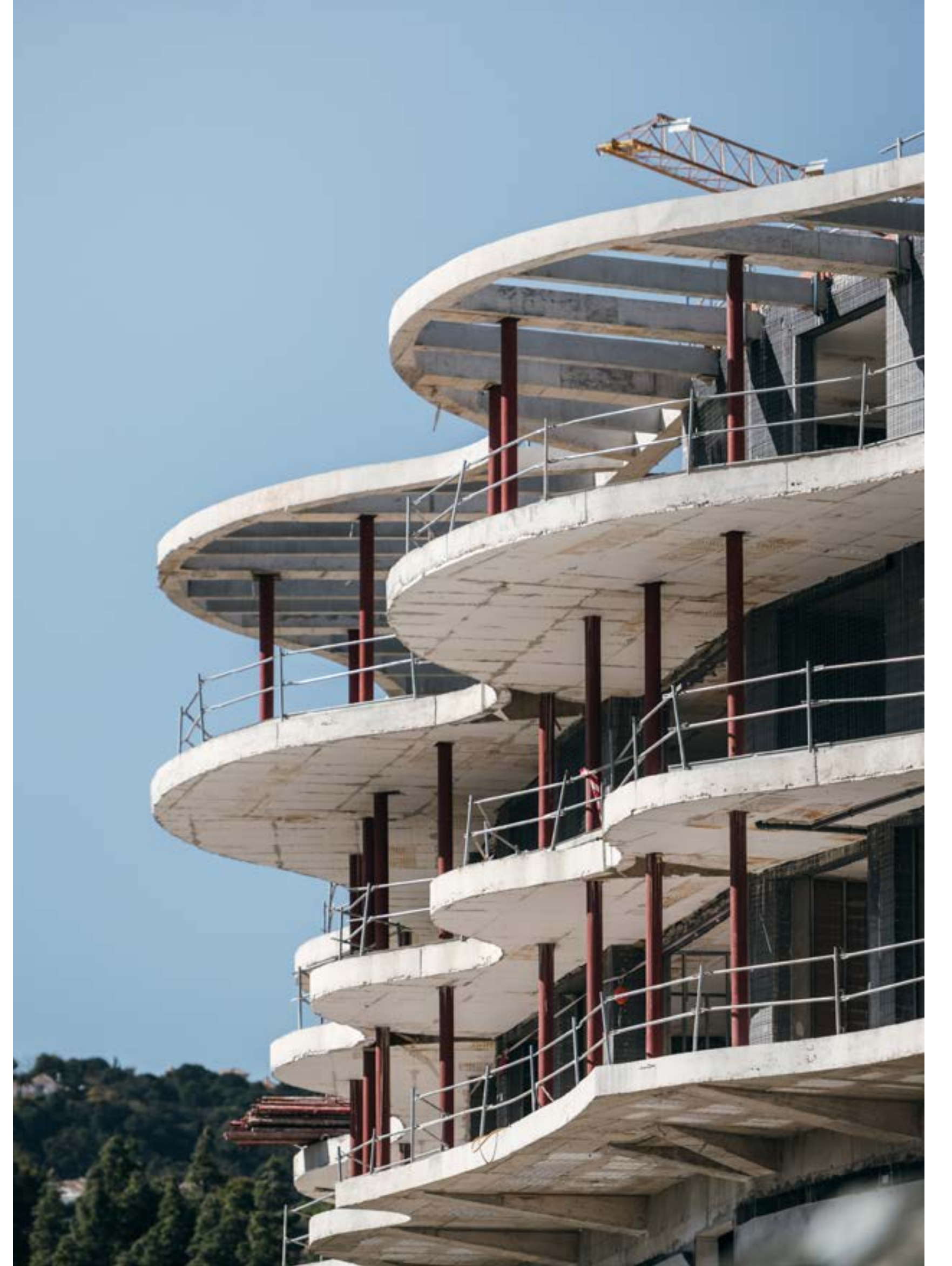
# THE VIEW

14.700 m<sup>2</sup>

Views of the World

Benahavís 2022







PRIVATE WORK

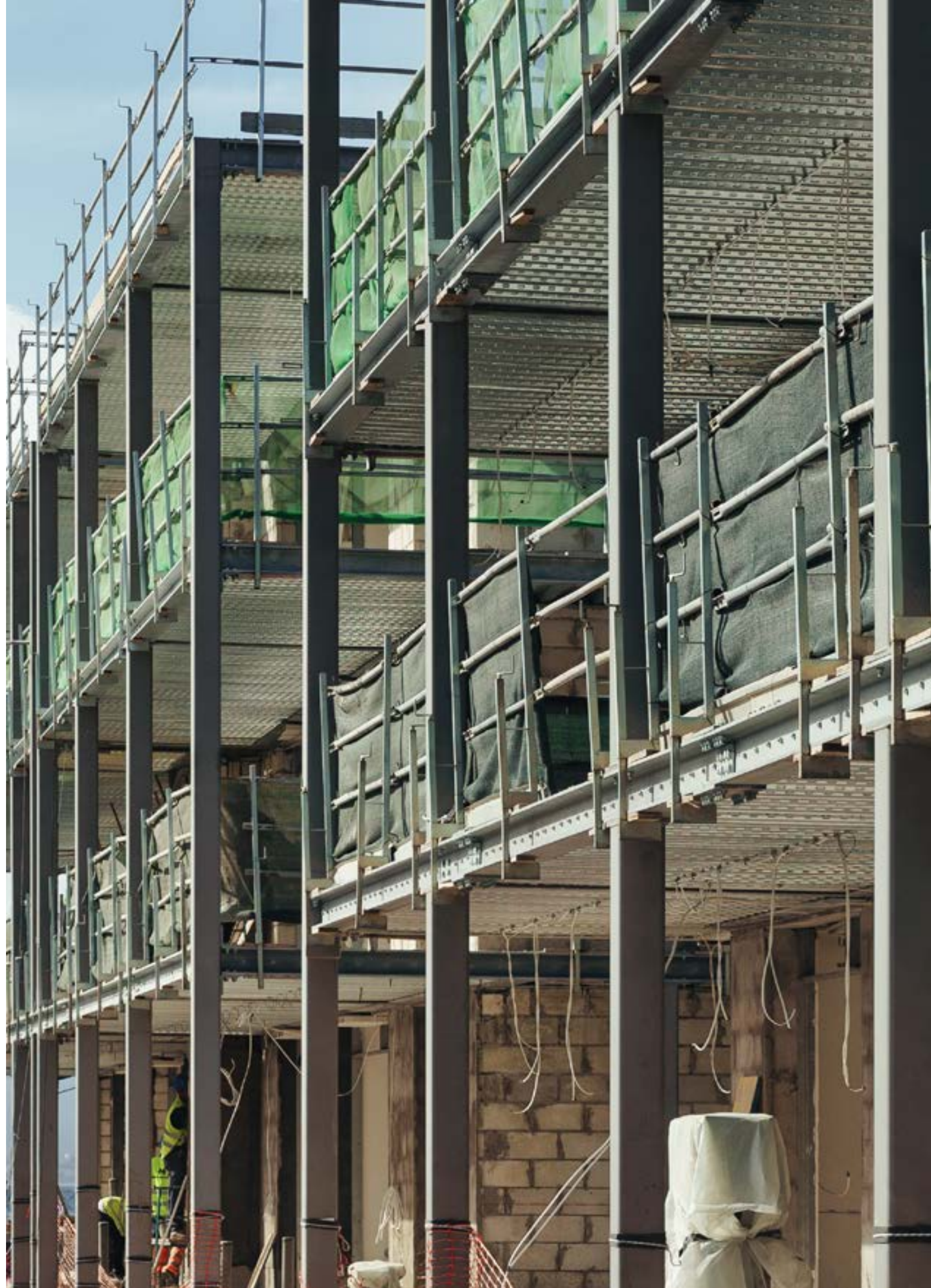
# MARINA CLUB

15.000 m<sup>2</sup>

Marina Club (Ocean Club)

Gibraltar 2023







PRIVATE WORK

# JARDINES DE RIVAS

14.410 m<sup>2</sup>

Habitat Inmobiliaria

Rivas Vaciamadrid







PRIVATE WORK

# MED TWO

40.000 m<sup>2</sup>

Higuerón Real Estate

Balmádena 2023





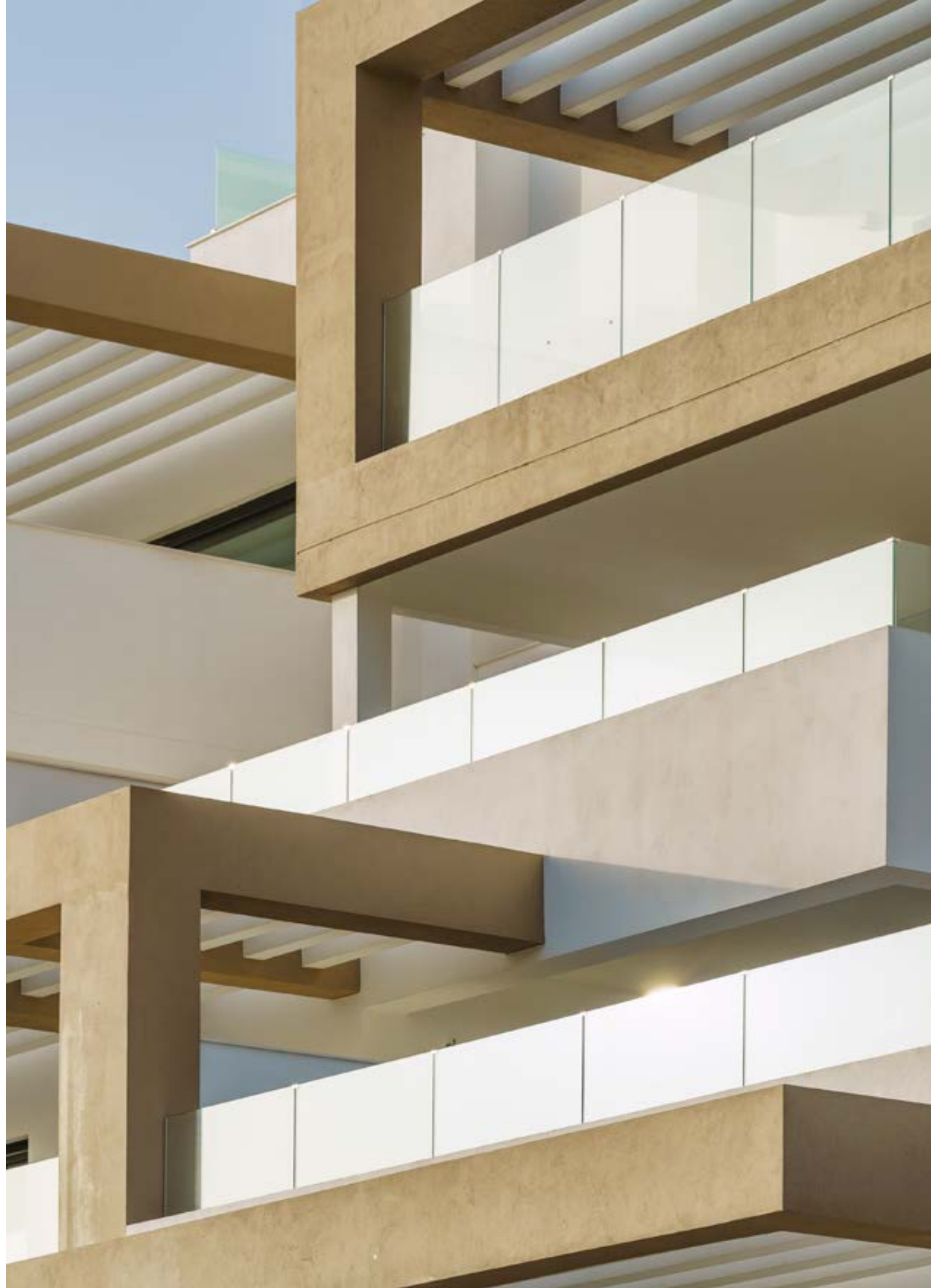


PRIVATE WORK

# SOUTH BAY LAS MESAS

15.000 m<sup>2</sup>  
AEDAS Homes  
Estepona 2021







PRIVATE WORK

# THE HILLS

1.300 m<sup>2</sup>

Cogitari Homes

Marbella 2023







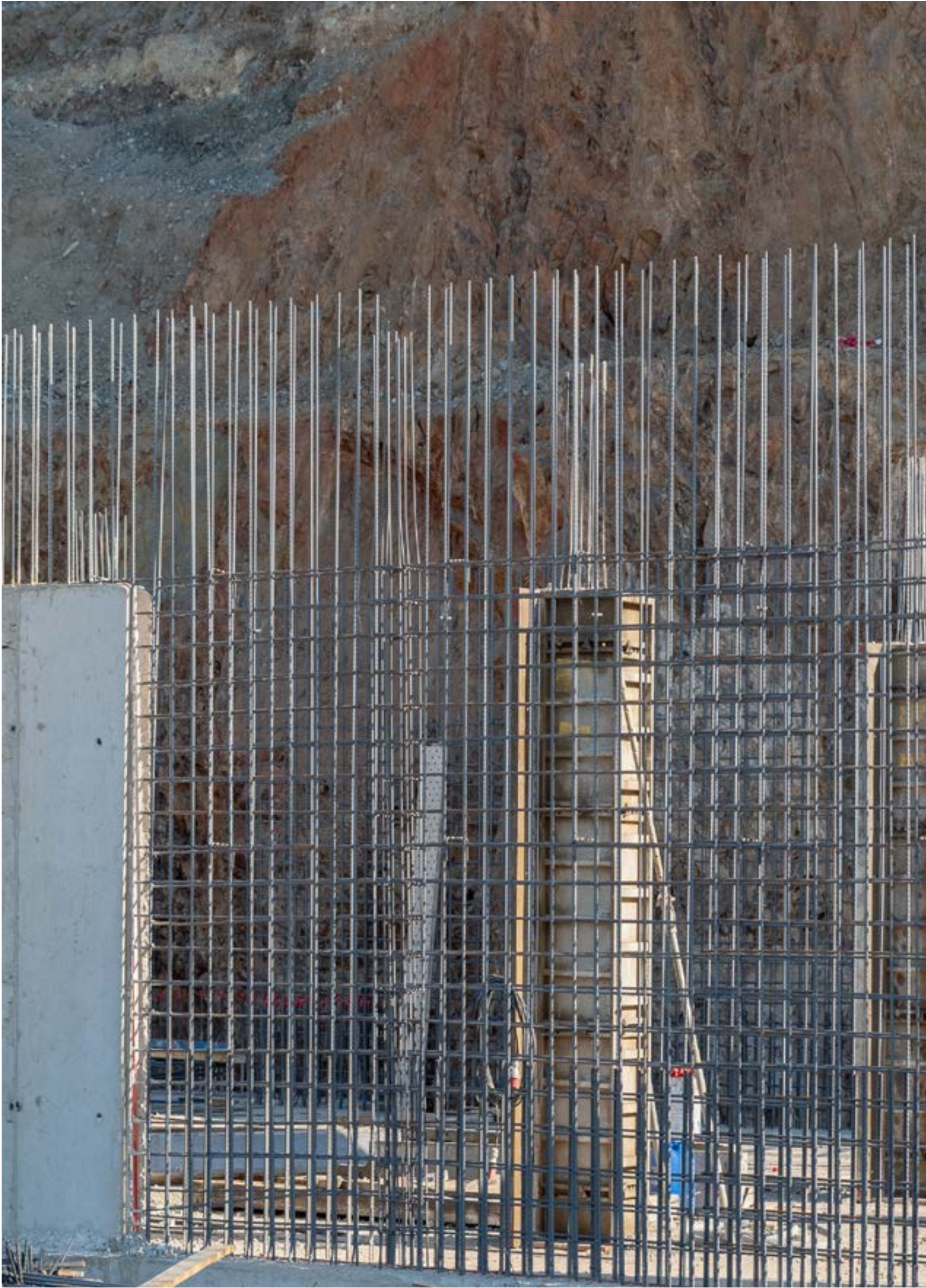
PRIVATE WORK

# THE VALLEY

63.500 m<sup>2</sup>

Higuerón Real Estate  
Benalmádena, in progress.







PRIVATE WORK

16 +

52.980 m<sup>2</sup>

Higuerón Real Estate  
Benalmádena, in progress.







PRIVATE WORK

# BANUS HEIGHTS

5.300 m<sup>2</sup>

Higuerón Real Estate  
Benahavís, in progress.







**Bilba.**

# TERTIARY PROJECTS





HOSPITALITY

# HOTEL BOUTIQUE LA FONDA

1.433 m<sup>2</sup>

Tesrol Property

Marbella 2022







HOSPITALITY

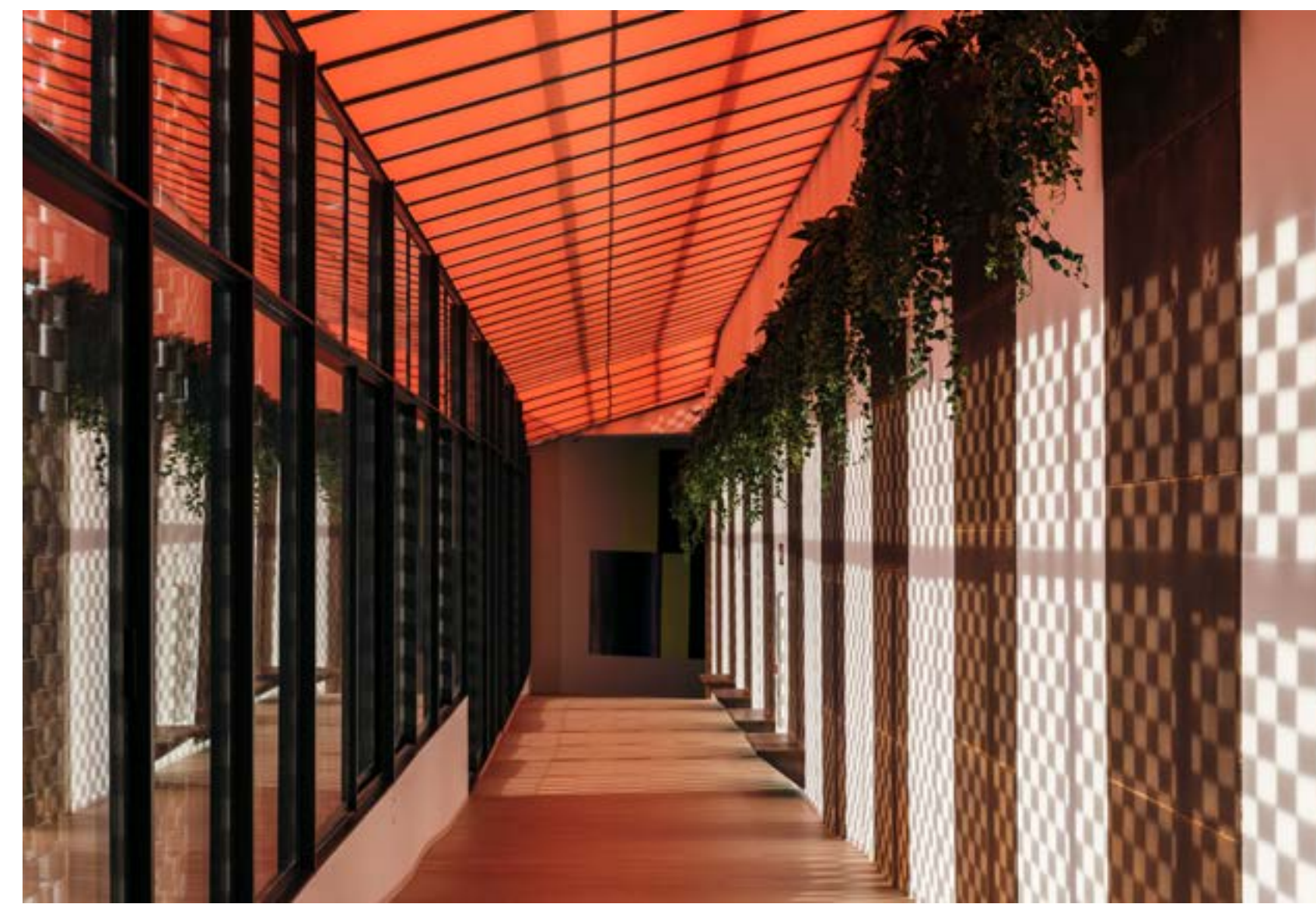
# HOTEL HIGERÓN CURIO

21.418 m<sup>2</sup>

Reserva del Higerón Resort

Fuengirola 2019







HOSPITALITY

# HOTEL LA ROSALEDA

7.000 m<sup>2</sup>

Sercotel Rosaleda

Málaga 2023







HOSPITALITY

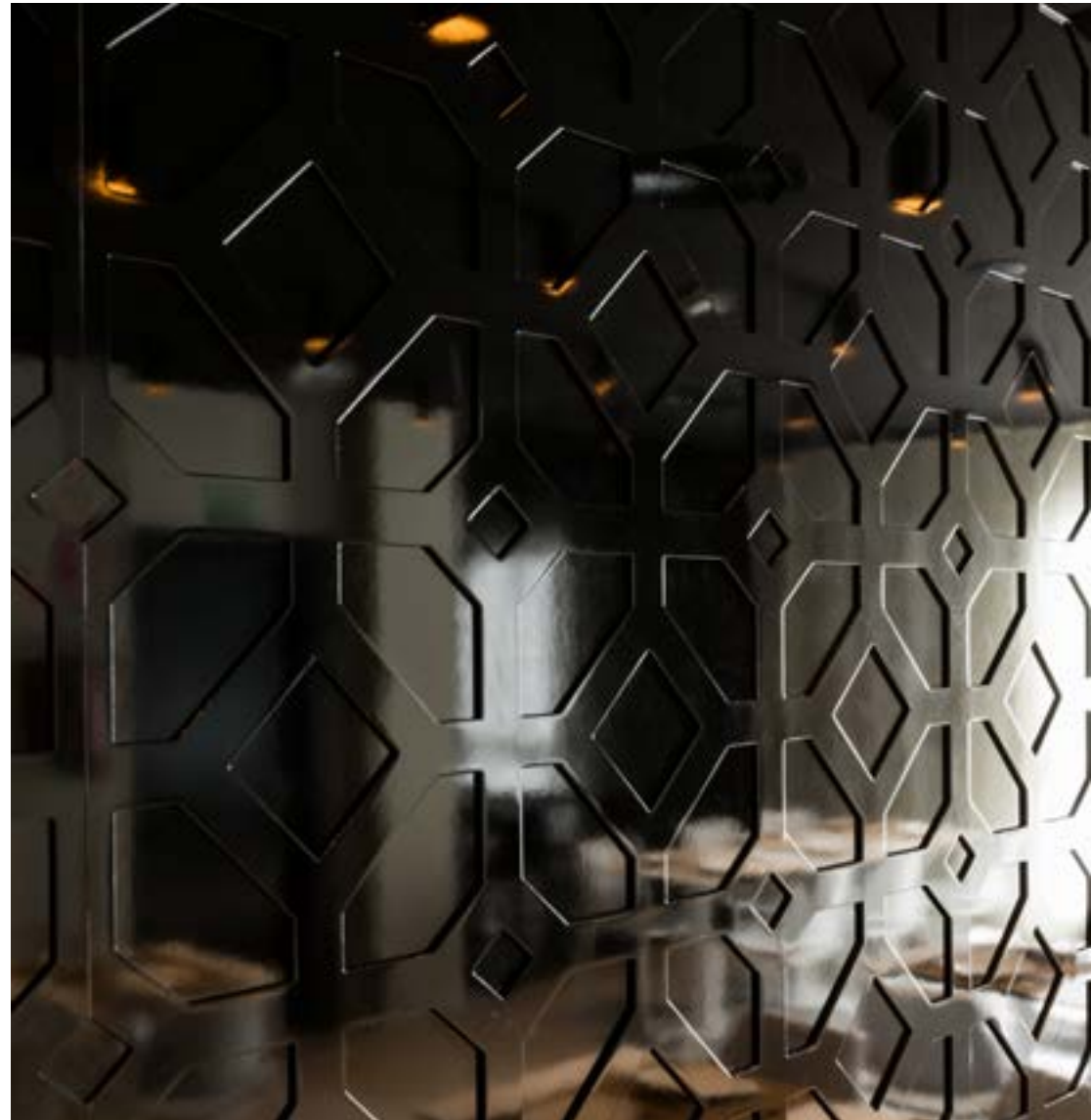
# HOTEL BOUTIQUE COSTA DEL SOL

1.617 m<sup>2</sup>

Hotel Boutique Costa del Sol

Torremolinos 2016







HOSPITALITY

*Viajar sirve para ajustar la imaginación  
a la realidad, y para ver las cosas como  
son en vez de pensar cómo serán.*  
Samuel Johnson

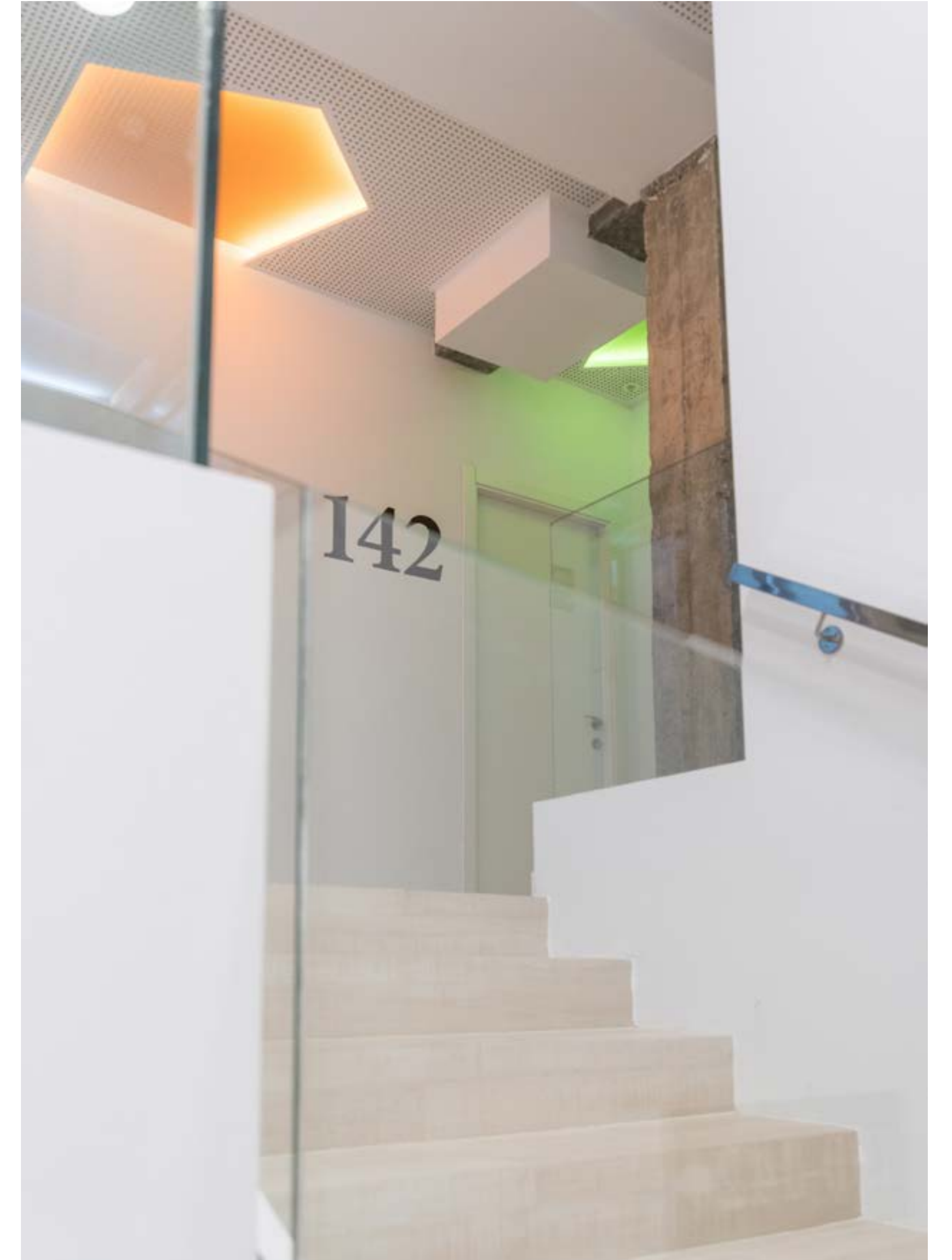
1.057m<sup>2</sup>

Hotel Atarazanas

Málaga 2017

HOTEL ATARAZANAS







HOSPITALITY

# HOTEL CAMINO REAL

1.987m<sup>2</sup>

Hotel Camino Real

Torremolinos 2017







**Bilba.**

# ENERGY PROJECTS





PRIVATE WORK

# TELESTO SOLAR PARK

38 mWp

Solaria

Guadalajara 2023







PRIVATE WORK

SELF-CONSUMPTION INSTALLATIONS IN  
ALL ITV OF ANDALUSIA

3.253,84 KWP

VEIASA

ITV Andalusia







PRIVATE WORK

# 83 SELF-CONSUMPTION INSTALLATIONS IN THE WASTEWATER TREATMENT PLANTS OF CASTILLA Y LEÓN

2.292,45 KWP

SOMACYL

83 installations in Castilla y León wastewater  
treatment plants.







PRIVATE WORK

# SHADOW TINGLADO AND PV PLATES

24,60 kW<sub>p</sub>

APPA

Punta Umbría







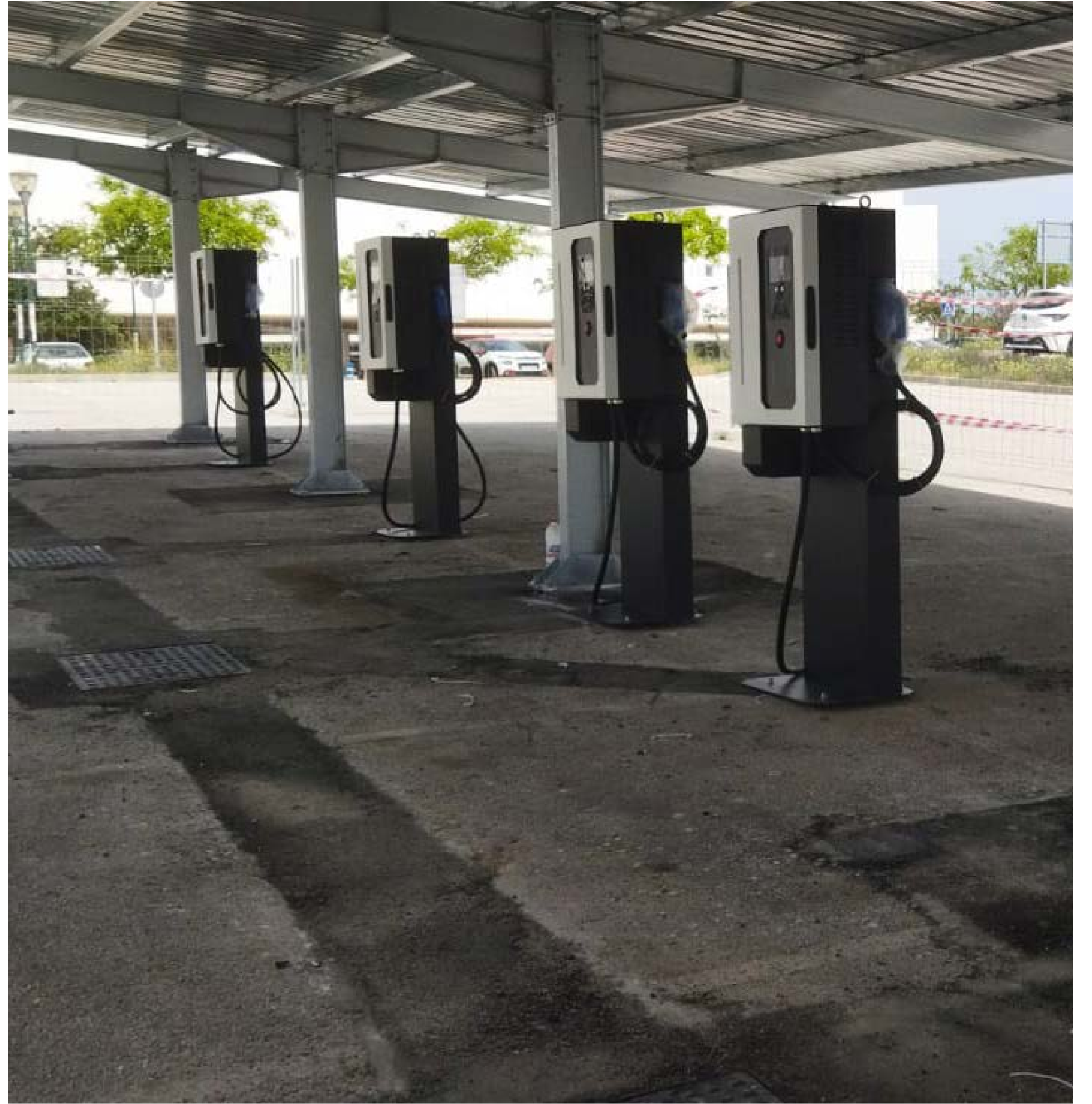
EDIFICIO DE INVESTIGACION ADA BYRON

PUBLIC WORK

# ADA BYRON PV INSTALLATION

57 kWp  
UMA  
Málaga







PRIVATE WORK

PV IN RESTAURANT

40,68 kWp

Venta El Frenazo

Los Barrios, Cádiz







PUBLIC WORK

21 SELF-CONSUMPTION INSTALLATIONS IN  
PUBLIC BUILDINGS

440,64 kWp

Vimed

Viladecans, Barcelona







PUBLIC WORK

# SIERRA ELVIRA PV INSTALLATION

733,26 kWp

Aguasvira

Granada







PRIVATE WORK

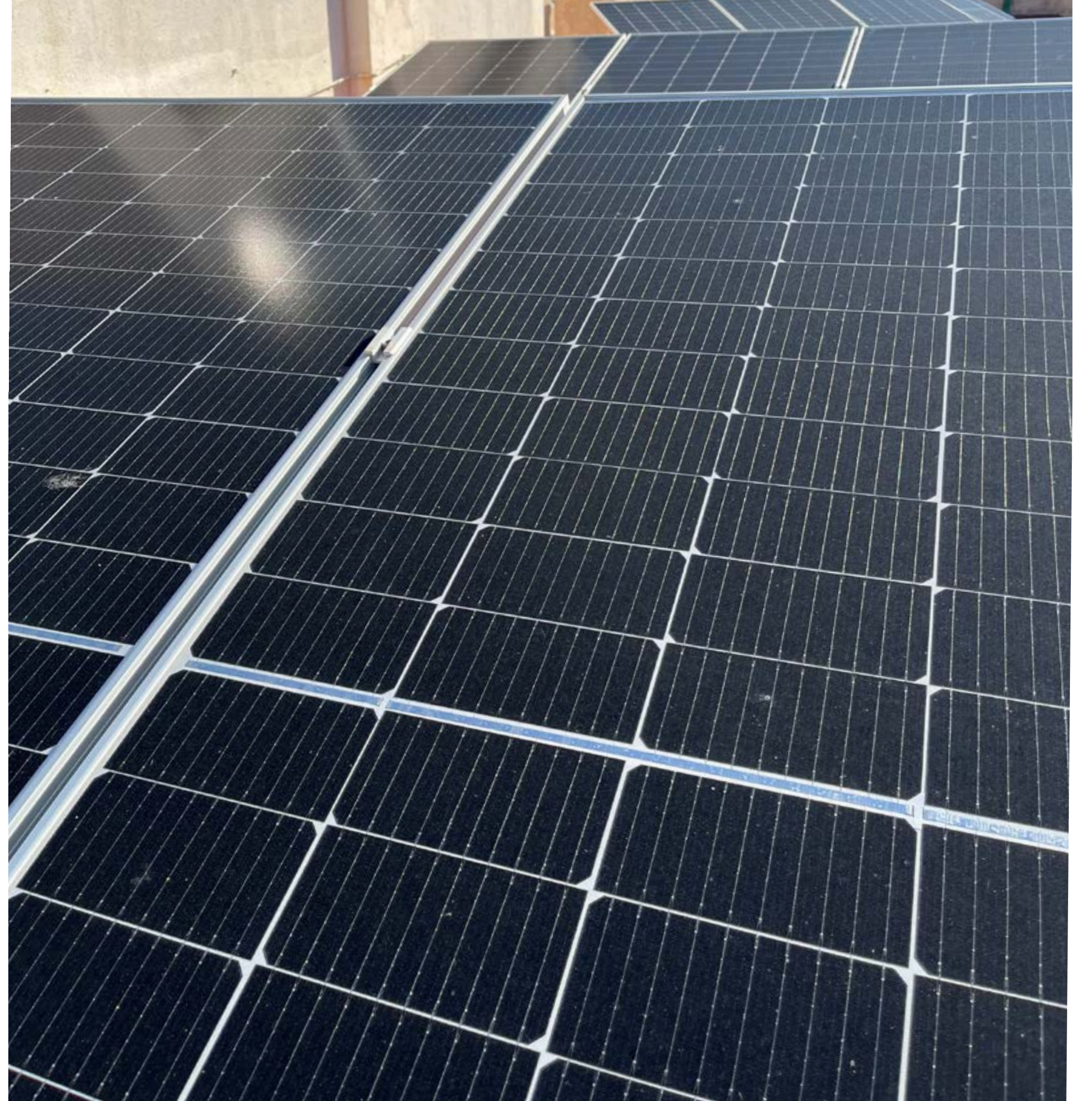
SELF-CONSUMPTION INSTALLATION

206,25 kWp

Residencia Hermanas Hospitalarias

Málaga







MADRID  
Avda Manoteras, nº 32, Edificio C, 4º Derecha,  
28050. Madrid

MÁLAGA  
C/ Alfonso Reyes, 8  
Local 1  
29002. Málaga

ÁLORA  
Ctra. Pizarra-Álora  
A 7077 - KM 4.710  
29500. Álora, Málaga

GIBRALTAR  
Marina Club Development & Resort  
Marina Bay Access Pier

CANARIAS  
C/ El Cardón (El Madroñal), 2  
Local 1  
38670. Adeje, Tenerife

ESTEPONA  
Av. Puerta del Mar, 50  
Bloque 3, Local 1ºE  
29680. Estepona, Málaga

CEUTA  
Paseo Marina Española, 7  
2ºB  
51001. Ceuta, España

**BILBA.ES**